

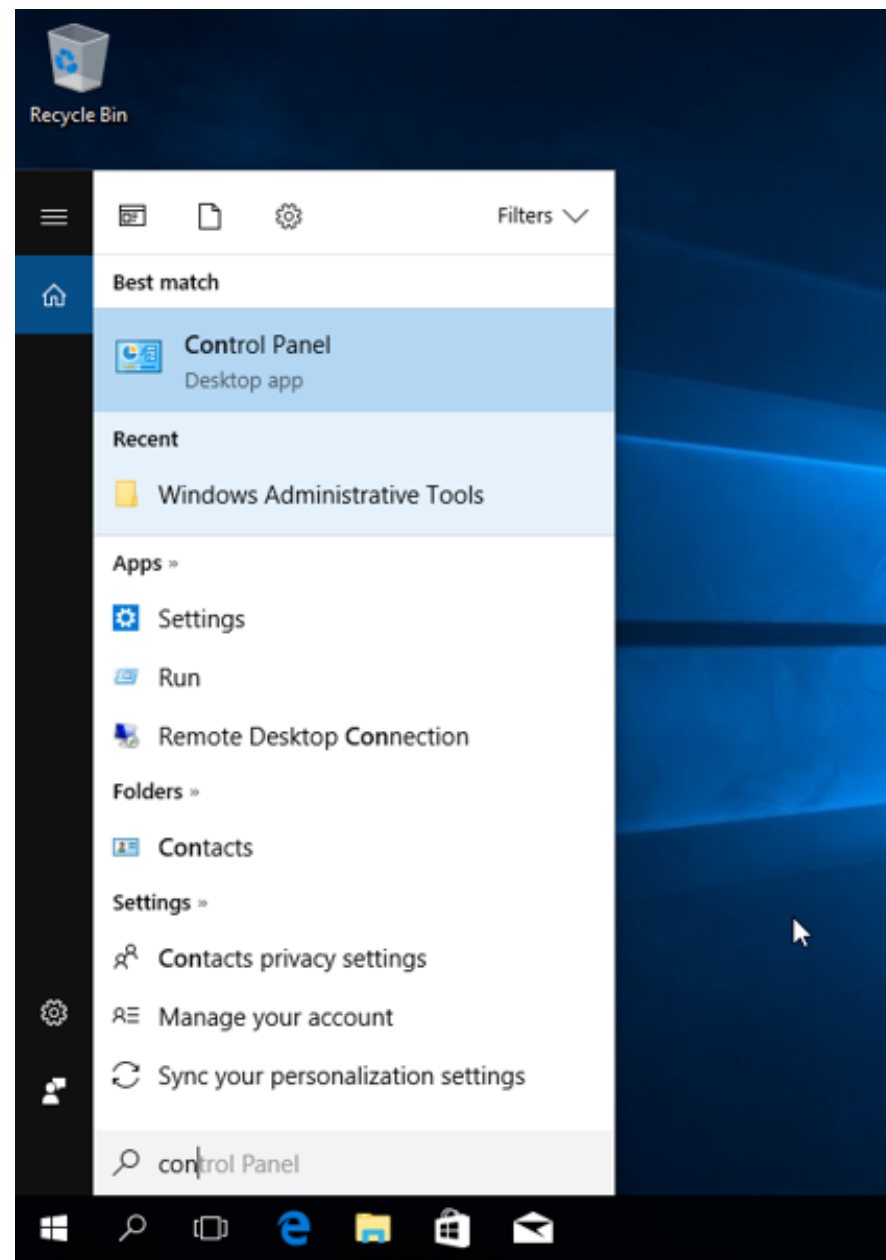
```
Ethernet adapter Ethernet0:

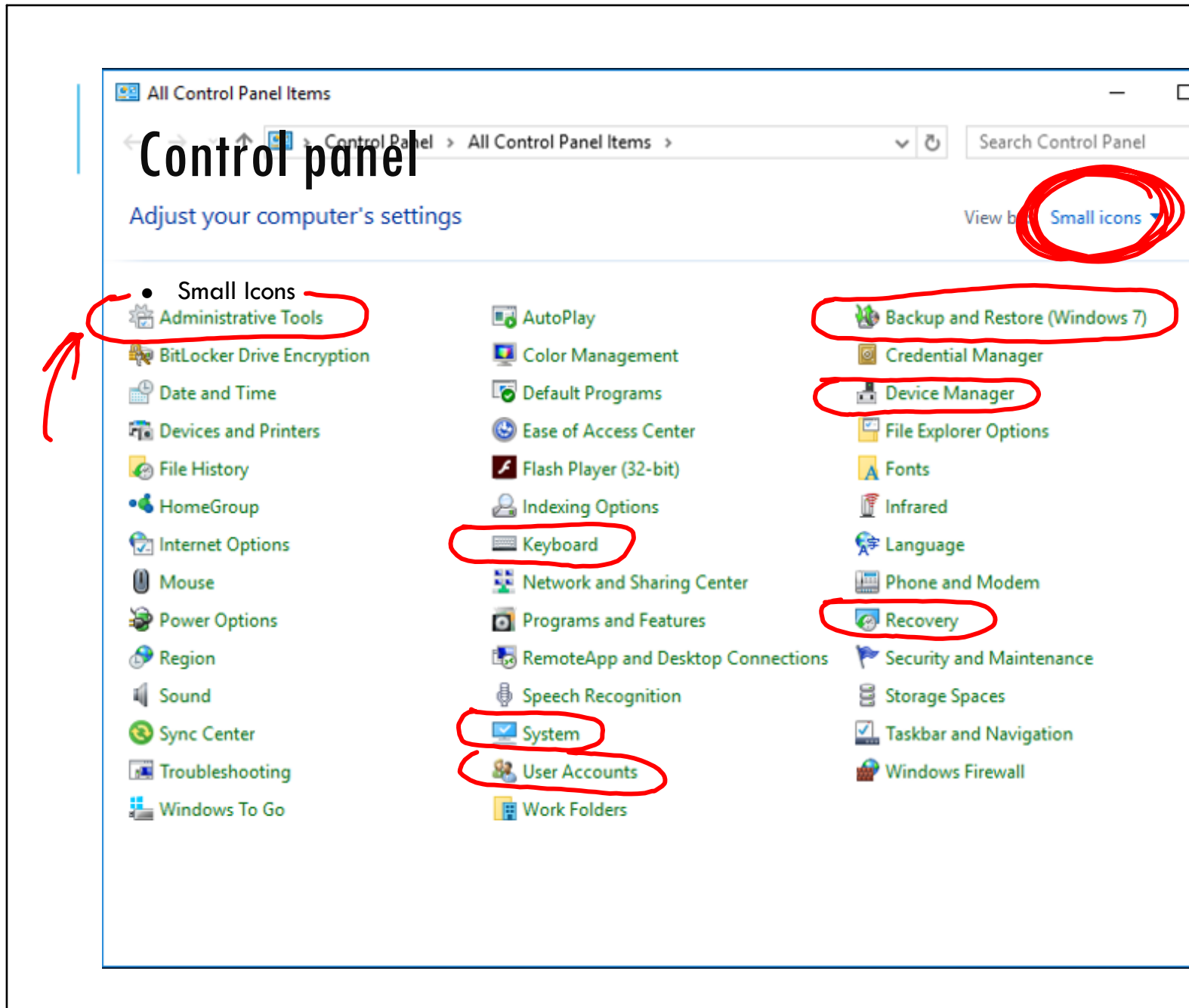
Connection-specific DNS Suffix . . . . . : 
Description . . . . . : Intel(R) 82574L Gigabit Network Connection
Physical Address. . . . . : 00-0C-29-0D-08-AF
DHCP Enabled. . . . . : Yes
Autoconfiguration Enabled . . . . . : Yes
Link-local IPv6 Address . . . . . : fe80::458d:343d:bca5:df0d%6(Preferred)
Autoconfiguration IPv4 Address. . . . . : 169.254.223.13(Preferred)
Subnet Mask . . . . . : 255.255.0.0
Default Gateway . . . . . : 
DHCPv6 IAID . . . . . : 83889193
DHCPv6 Client DUID. . . . . : 00-01-00-01-21-38-40-5A-00-0C-29-0D-08-AF
DNS Servers . . . . . : fec0:0:0:ffff::1%1
                       : fec0:0:0:ffff::2%1
                       : fec0:0:0:ffff::3%1
NetBIOS over Tcpi. . . . . : Enabled
```

Computer management  
adapter settings

HW Hilgersom

# Control panel





# ADMINISTRATIVE TOOLS

- Computer Management

The screenshot shows the Windows Administrative Tools folder. The left sidebar contains navigation links for Desktop, Downloads, Documents, Pictures, OneDrive, and This PC. The main pane displays a list of administrative tools. Red annotations highlight several items: a red arrow points from the 'Computer Management' bullet point to the 'Computer Management' entry in the list; another red arrow points from the 'Computer Management' entry to the 'Computer Management' icon in the sidebar; red circles highlight the 'Computer Management', 'Disk Cleanup', 'Event Viewer', and 'Services' entries in the list.

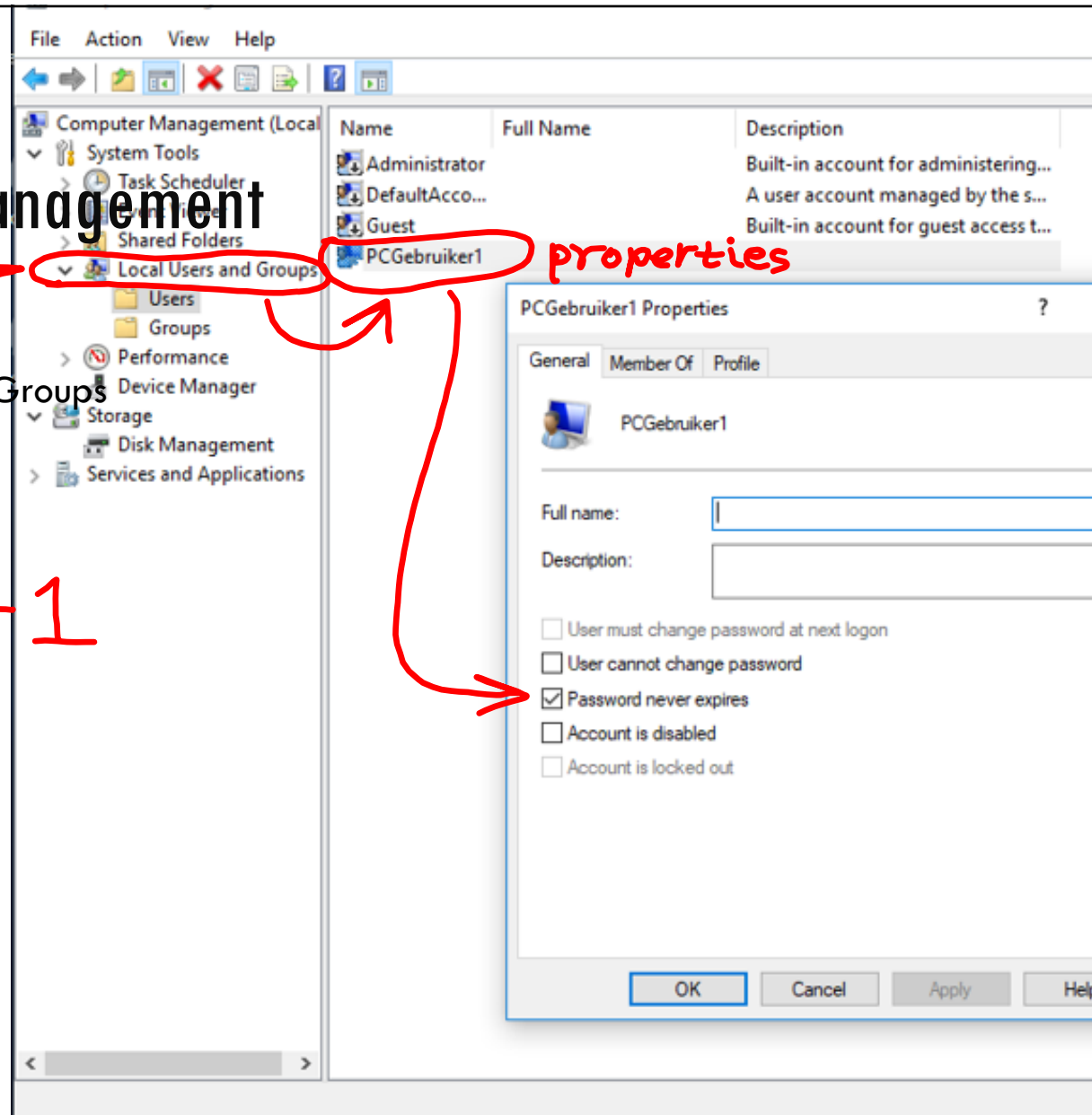
Name	Date modified
Component Services	18/03/2017 21:57
Computer Management	18/03/2017 21:57
Defragment and Optimize Drives	18/03/2017 21:57
desktop	05/09/2017 17:35
Disk Cleanup	18/03/2017 21:58
Event Viewer	18/03/2017 21:57
iSCSI Initiator	18/03/2017 21:57
Local Security Policy	18/03/2017 21:59
ODBC Data Sources (32-bit)	18/03/2017 21:58
ODBC Data Sources (64-bit)	18/03/2017 21:57
Performance Monitor	18/03/2017 21:57
Print Management	18/03/2017 21:59
Resource Monitor	18/03/2017 21:57
Services	18/03/2017 21:57
System Configuration	18/03/2017 21:57
System Information	18/03/2017 21:57
Task Scheduler	18/03/2017 21:57
Windows Firewall with Advanced Security	18/03/2017 21:57
Windows Memory Diagnostic	18/03/2017 21:57

19 items | 1 item selected 1,13 KB

# Computer management

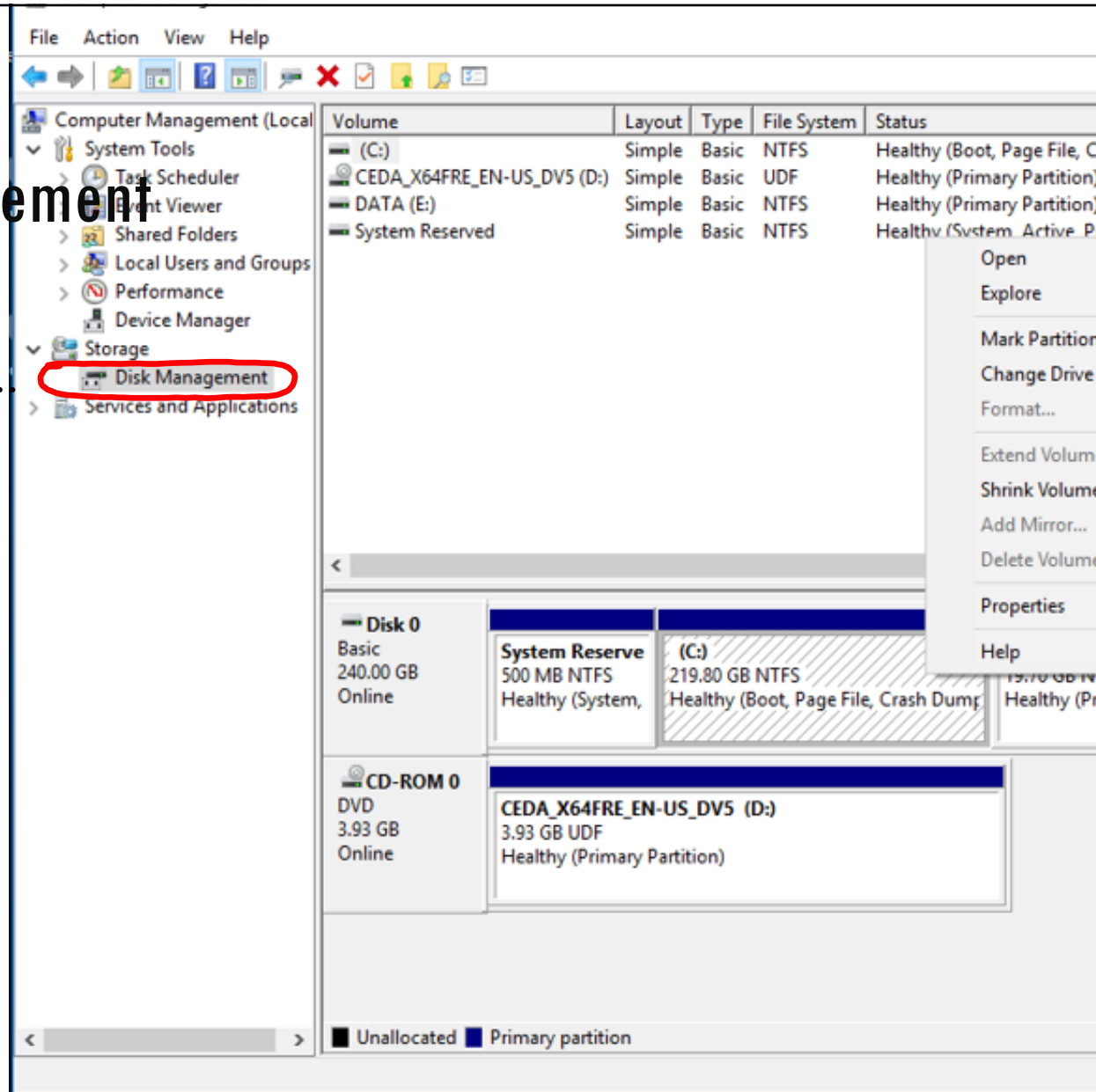
- Local Users and Groups
- Users
- Properties
- Never Expires

PCGebruiker1



# DISK management

- Shrink Volume ...



# DISK management

- SYST (C:)
- DATA (E:)

The screenshot shows the Windows Computer Management console, specifically the Disk Management section. The left pane shows the navigation tree with 'Disk Management' selected. The main area displays a table of volumes and a graphical disk layout below it.

Volume	Layout	Type	File System	Status
(C:)	Simple	Basic	NTFS	Healthy (Boot, Page File, Cr...
CEDA_X64FRE_EN-US_DV5 (D:)	Simple	Basic	UDF	Healthy (Primary Partition)
DATA (E:)	Simple	Basic	NTFS	Healthy (Primary Partition)
System Reserved	Simple	Basic	NTFS	Healthy (System, Active, Pr...

Disk	Partition	Size	File System	Status
Disk 0 Basic 240.00 GB Online	System Reserve	500 MB	NTFS	Healthy (System, ...)
	(C:)	219.80 GB	NTFS	Healthy (Boot, Page File, Crash Dump, ...)
	DATA (E:)	19.70 GB	NTFS	Healthy (Pri...
CD-ROM 0 DVD 3.93 GB Online	CEDA_X64FRE_EN-US_DV5 (D:)	3.93 GB	UDF	Healthy (Primary Partition)

Legend: ■ Unallocated ■ Primary partition

# EVENT VIEWER

Event Viewer

Windows Logs

System

